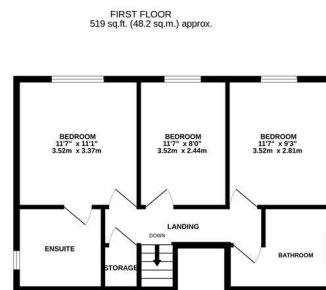
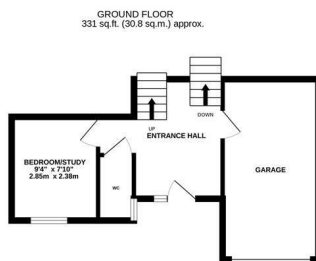
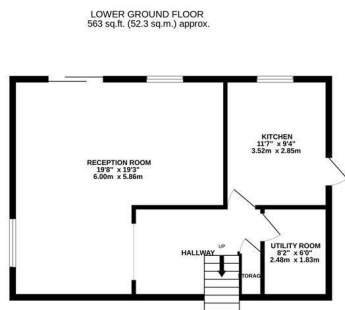


Harrow Lane, St. Leonards-On-Sea TN37 7PR

Offers in excess of £425,000



A bright and spacious four bedroom DETACHED FAMILY HOME with a GARAGE AND OFF ROAD PARKING situated in a sought after position ideally located close to popular Primary and Secondary Schools, within easy reach of transport links and the Conquest Hospital. Spanning THREE STOREYS, the accommodation here is arranged as a large OPEN PLAN LIVING SPACE on the lower floor which provides plenty of room for a full dining table creating the ideal sociable setting with sliding doors opening to the rear garden, while the FITTED KITCHEN is separate offering ample storage and worktop space. There is also a handy UTILITY ROOM on this floor. On the ground floor there is one bedroom, a CLOAKROOM and access to the INTEGRAL GARAGE while the further THREE DOUBLE BEDROOMS are housed on the upper floor together with a family bathroom. The principal bedroom also benefits from an EN-SUITE BATHROOM where there is a corner bath and separate shower enclosure. The rear garden is a particular feature here, there is an area of decking off of the living room providing the perfect spot to DINE AL-FRESCO followed by a generous EXPANSE OF LAWN while to the front of the property there is a DRIVEWAY with off road parking for multiple vehicles leading to the garage. Being sold with NO ONWARD CHAIN this fantastic family home is not to be missed.



TOTAL FLOOR AREA: 1413 sq.ft. (131.3 sq.m.) approx.

Whilst every attempt has been made to ensure the accuracy of the floorplan contained here, measurements of doors, windows, rooms and any other items are approximate and no responsibility is taken for any error, omission or mis-statement. This plan is for illustrative purposes only and should be used as such by any prospective purchaser. The services, systems and appliances shown have not been tested and no guarantee as to their operability or efficiency can be given.

Made with Metropix ©2025

